

Aseptic fittings for Orbital welding DIN 11865

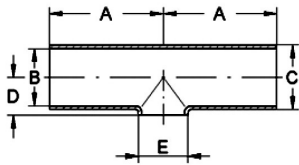
Art.No

EUR

Art.No

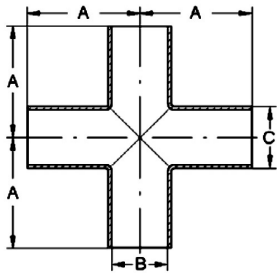
EUR

Reducing T-piece ISO, short, H2



DN	A	B	C	D	E	Art.No	EUR	AISI316L-1.4435	EUR
219,1-114,3	300	213,9	219,1	115,6	114,3			484693	Enquiry
219,1-139,7	300	213,9	219,1	119,6	139,7			484694	Enquiry
219,1-168,3	300	213,9	219,1	122,6	168,3			484695	Enquiry

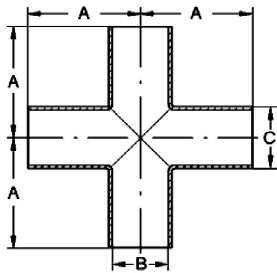
Cross piece DIN, H3



DN	A	B	C	Art.No	EUR	AISI316L-1.4435	EUR
10	35	10	13	489030		489030	Enquiry
15	35	16	19	489031		489031	Enquiry
20	40	20	23	489032		489032	Enquiry
25	50	26	29	489033		489033	Enquiry
32	55	32	35	489034		489034	Enquiry
40	60	38	41	489035		489035	Enquiry
50	80	50	53	489036		489036	Enquiry
65	105	66	70	489037		489037	Enquiry
80	130	81	85	489038		489038	Enquiry
100	155	100	104	489039		489039	Enquiry

Similar to DIN 11865

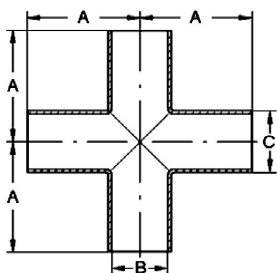
Cross piece ASME, H3



DN	A	B	C	Art.No	EUR	AISI316L-1.4435	EUR
1/2"	47,5	9,4	12,7	489101		489101	Enquiry
3/4"	51	15,75	19,05	489102		489102	Enquiry
1"	54	22,1	25,4	489103		489103	Enquiry
1,5"	60,3	34,8	38,1	489104		489104	Enquiry
2"	73	47,5	50,8	489105		489105	Enquiry
2,5"	80	60,2	63,5	489106		489106	Enquiry
3"	85	72,9	76,2	489107		489107	Enquiry
4"	105	97,38	101,6	489108		489108	Enquiry

Similar to DIN 11865

Cross piece ISO, H3



DN	A	B	C	Art.No	EUR	AISI316L-1.4435	EUR
8	32	10,3	13,5	489229		489229	Enquiry
10	34	14	17,2	489230		489230	Enquiry
15	36	18,1	21,3	489231		489231	Enquiry
20	55	23,7	26,9	489232		489232	Enquiry
25	60	29,7	33,7	489233		489233	Enquiry
32	65	38,4	42,4	489234		489234	Enquiry
40	65	44,3	48,3	489235		489235	Enquiry
50	90	56,3	60,3	489236		489236	Enquiry
65	110	72,1	76,1	489237		489237	Enquiry

Similar to DIN 11865

LINNE MANN
Rohrverbindungen • Edelstahlarmaturen
Pipe connections • Stainless steel fittings

LINNE MANN GmbH • Heerweg 14-16
72070 Tübingen / Germany

Fon: +49 (0) 7071 97555-0
Fax: +49 (0) 7071 97555-10

E-Mail: info@linnemann-online.com
Internet: www.linnemann-online.com